



K I F A

KOREA FAR INFRARED ASSOCIATION

KOREA INSTITUTE OF FAR INFRARED APPLIED ESTIMATION

441, Songpa-Daero, Songpa-Gu, Seoul, Korea

<http://www.kfir.or.kr>

TEL 82-2-2203-6037

FAX 82-2-2203-6061

CERTIFICATE OF TESTING RESULT

Serial No. of Issue : KFIA-166
Name of Applicant : KIM CHUN CHA [R&L CO., LTD]
Address of Applicant : (Soha-dong, 1110, 1111, 1112, 1113, 1116, 1117, 11Floor, Kwang Myung Ace High-End Tower) 108, Haan-ro, Kwangmyung-si, Gyeonggi-do, Korea
Date of Receipt : 5. 8. 2014
Name of Test Sample : BIOMAT 7000MX

TEST RESULTS

Test Item	Sample	Early Conc. (CFU/ml)	After 18 hours (CFU/ml)	Reduction Rate Of Bacteria(%)
Antibacterial Test For <i>Staphylococcus aureus</i>	Control	3.6×10^4	2.4×10^6	—
	BIOMAT 7000MX		$< 2.0 \times 10^2$	99.9
Antibacterial Test For <i>Klebsiella pneumoniae</i>	Control	2.8×10^4	1.5×10^6	—
	BIOMAT 7000MX		$< 2.0 \times 10^2$	99.9

Note) 1) Control : KS K 0905 Standard adjacent fabrics for colour fastness test(Cotton)

2) The bacteria number on the petri dish was detected by multiplication of dilution rate. End.

1) Test Method : KS K 0693 : 2011

2) Name of Used bacteria

Staphylococcus aureus ATCC 6538

Klebsiella pneumoniae ATCC 4352

3) Refer to the Enclosed (2-1, 2-2)

4) Usage : Quality control

※ This certificate of testing result shall be used within the purpose of its defined usage.

5

15

2014

month

day

year

Signed

Choi T. S.

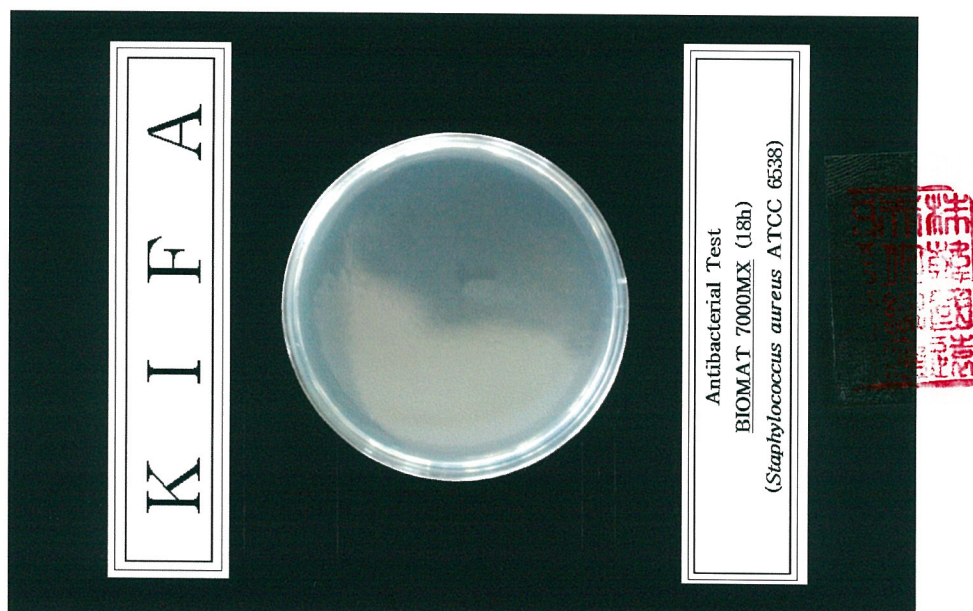
The director of Korea Institute of
Far Infrared Applied Estimation

KIFA

Serial No. of Issue : KFIA-166
Name of Test Sample : BIOMAT 7000MX



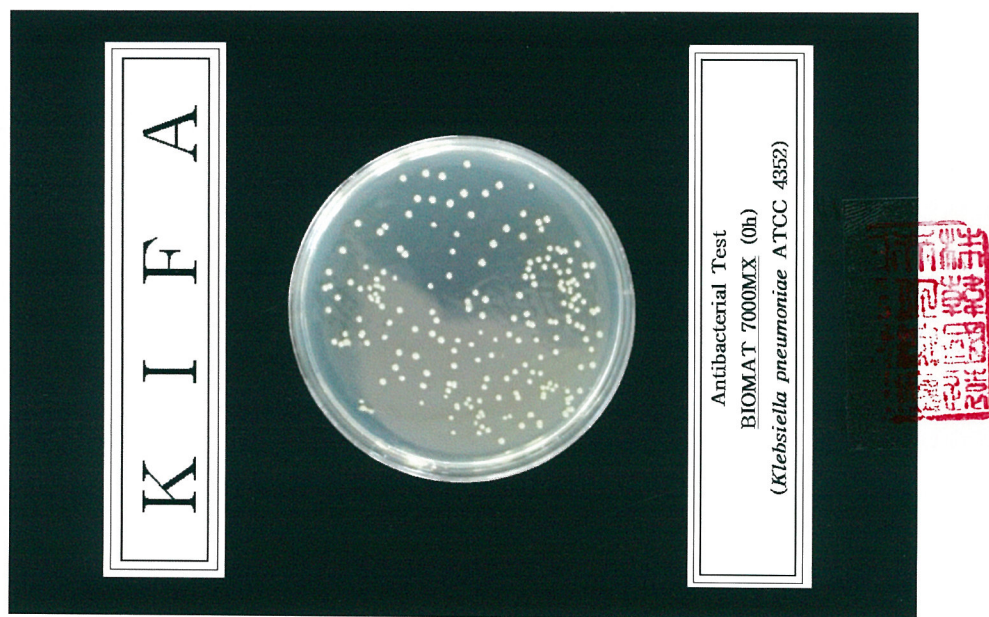
<Fig. 1>



<Fig. 2>

KIFA

Serial No. of Issue : KFIA-166
Name of Test Sample : BIOMAT 7000MX



<Fig. 3>



<Fig. 4>